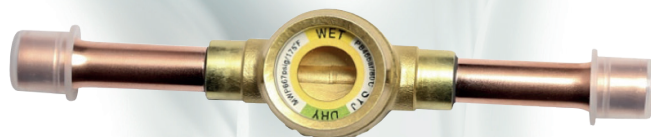




## Sight Glass

Sight glasses are installed after the filter drier in liquid line of refrigerating systems, in order to observe property changes of the refrigerant (liquid/vapor) and to indicate the moisture level by colors.



### FEATURES

- HIGH PRECISION COLOR INDICATOR
- INDICATOR PASTED CLOSELY TO THE GLASS TO PREVENT SURFACE CONTAMINATION
- SOLID AND CORROSION RESISTANT BRASS MATERIAL
- GOOD READABILITY DUE TO HIGH CLEAR SIGHT GLASS OF WIDE ANGLE
- SEALING OF LOW CREEP PTFE TO ENSURE LEAKAGE FREE PERFORMANCE
- NEW ANNULAR HUMIDITY COLOR INDICATOR. FULL PORT PASSAGE WITH LOW PRESSURE DROP

### GENERAL SPECIFICATION

- Applicable for all common HCFC, HFC, HC, HFO<sup>1)</sup> refrigerants such as: R22, R134a, R404A, R407C, R410A, R507, R407A/F, R1234ze<sup>2)</sup>, R290<sup>2)</sup>, R32<sup>2)</sup>, R448A/R449A, R452A, R450A/R513A
- Ambient temperature min./max.: -50°C / +80°C
- Medium temperature TS min./max.: -50°C / +80°C
- Max. operating pressure PS: 4,6 MPa (46 bar)
- Installation position:
  - Liquid and suction line
  - Preferably in vertical lines, recommended position for horizontal lines is upwards without inclination in any direction
- Declaration according to PED  
( all products have been covered by Art.4.3 PED Directive 2014/68/EU )

**Note:** 1) please contact Sanhua representative regarding applications with HFO  
2) for flammable refrigerants only solder versions can be used





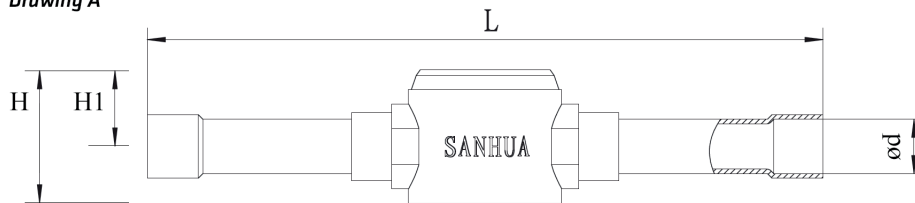
# SANHUA SERIES SYJ Sight Glass

## GENERAL CHARACTERISTICS

Version with Solder Connections

Model Series	Model Name	Part Number (multi package) <sup>1)</sup>	Connection Type	Connections ODF		Dimensions & Weight				Drawing
				Ød		L	H	H1	Weight	
				[inch]	[mm]	[mm]	[mm]	[mm]	[g]	
SYJ6	SYJ06H12	10285007102	ODF x ODF solder	-	6	101	24	14	100	A
SYJ6	SYJ06H11	10285007002		1/4	-	101	24	14	100	
SYJ10	SYJ10H11	10285007202		3/8	-	119	24	14	100	
SYJ10	SYJ10H12	10285007302		-	10	119	24	14	100	
SYJ12	SYJ12H11	10285006902		1/2	-	146	30	17	200	
SYJ12	SYJ12H12	10285007402		-	12	146	30	17	200	
SYJ16	SYJ16H11	10285007502		5/8	16	146	30	17	200	
SYJ19	SYJ19H11	10285007602		3/4	-	173	37	21	300	
SYJ22	SYJ22H11	10285007702		7/8	22	173	37	21	300	

Drawing A



Version with male/male Flare Connections

Model Series	Model Name	Part Number (multi package) <sup>1)</sup>	Connection Type	SAE Flare	Dimensions & Weight				Drawing
				Ød	L	H	H1	Weight	
				[inch]	[mm]	[mm]	[mm]	[g]	
SYJ6	SYJ06L11	10285007902	Flare M x M	1/4	67	24	14	110	B
SYJ10	SYJ10L11	10285008102		3/8	82	24	14	240	
SYJ12	SYJ12L11	10285008302		1/2	88	30	17	240	
SYJ16	SYJ16L11	10285008502		5/8	104	30	17	320	
SYJ19	SYJ19L11	10285008702		3/4	110	32	15	340	C

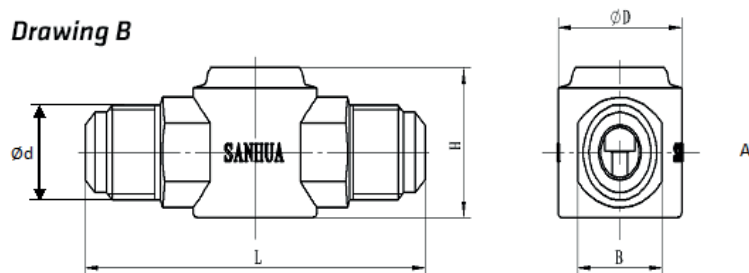
**Note:** 1) Available also as industrial package. Contact Sanhua for more details.



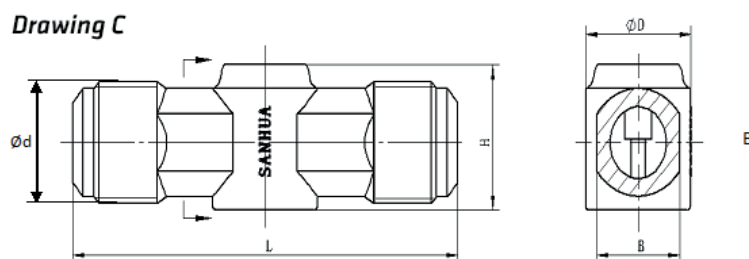


# SANHUA SERIES SYJ Sight Glass

**Drawing B**



**Drawing C**

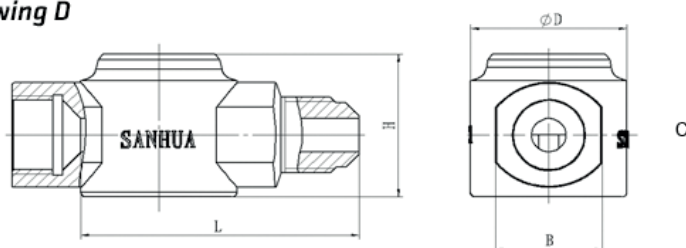


Version with male/female Flare connections

Model Series	Model Name	Part Number (multi package) <sup>1)</sup>	Connection Type	SAE Flare	Dimensions & Weight				Drawing
				Ød	H	ØD	B	Weight	
				[inch]	[mm]	[mm]	[mm]	[g]	
SYJ6	SYJ06L41	10285008002	Flare F x M	1/4	30	32	22	200	D
SYJ10	SYJ10L41	10285008202		3/8	30	32	22	240	
SYJ12	SYJ12L41	10285008402		1/2	32	30	24	250	
SYJ16	SYJ16L41	10285008602		5/8	37	30	24	320	
SYJ19	SYJ19L41	10285008802		3/4	37	30	24	330	

**Note:** 1) Available also as industrial package. Contact Sanhua for more details.

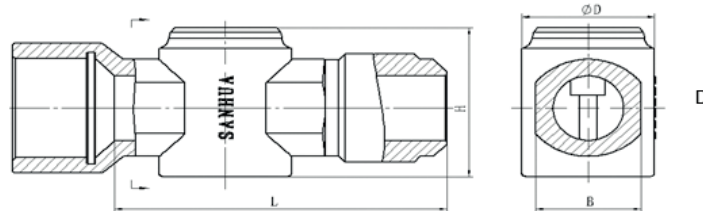
**Drawing D**





# SANHUA SERIES SYJ Sight Glass

Drawing E



## Moisture Indication Limits

Refrigerant	Moisture Content 25°C: PMM		
	Green/Dry	Middle Color	Yellow/Wet
R22	<100	100~200	>200
R134a	<90	90~180	>180
R404A	<40	40~100	>100
R410A	<90	90~300	>300
R507	<15	15~90	>90
R407C	<120	120~280	>280

Refrigerant	Moisture Content 40°C: PMM		
	Green/Dry	Middle Color	Yellow/Wet
R22	<140	140~350	>350
R134a	<120	120~330	>335
R404A	<80	80~160	>160
R410A	<200	200~580	>580
R507	<80	80~170	>170
R407C	<100	100~260	>260

